

# **SUPER Z DUALS**

**With QuikDraw™ tensioning system**

## Heavy Duty Cable Chain (Duals) Installation and Removal Instructions



**SUPER Z** is one of the most popular winter traction products available today. Please read and follow the installation and usage tips shown here. A few moments spent familiarizing yourself with this product's features will yield many hours of safe and trouble-free winter driving.

- \* This product is intended for use on snow and ice covered roads. As such, it is legal in every state and province in North America, including those where studded tires are prohibited.
- \* Refer to page three and four of this booklet for important information regarding the use of this product.

A properly installed chain:

**Important:** We strongly recommend that the chains be fitted to the tire prior to actual use to insure proper fit. Tire sizes may vary because of age, manufacturer, tread or type. Please ensure that the following points are correct when installing your chains.

1. The cable chain should drape at least 3 inches over each side of the tire from the edge of the tread.
2. The round hook connector should be on the inside of the tire; flat hook connector should be on the outside of the tire. Smooth portion of connectors and cross member hooks should be against tire. (Marked "TIRE SIDE".)

Covered by one or more of the following patents: U.S. Patent Nos. 4,366,850; 5,056,574; Canadian Patent No. 1,170,154; Chinese Patent No. 15831; and Taiwanese Patent no. 53400. U.S. and foreign patents pending.

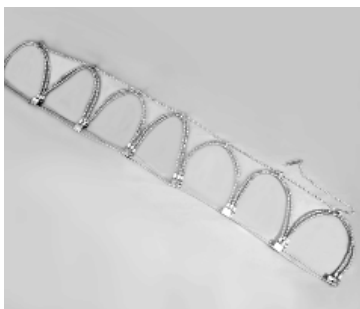
© Security Chain Co. Div of Burns Bros Inc., Clackamas, OR 97015-0949

All rights reserved; no part may be reproduced in any form or by any means without written permission.

**SCC**  
**Security Chain Co.**

Div. of Burns Bros. Inc.  
P.O. Box 949  
Clackamas, OR 97015-0949

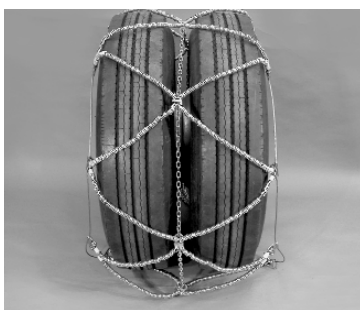
## Installation



1  
Park the vehicle in a safe area on level ground and set the emergency brake. Lay the chains out on the ground next to the tires they are intended to cover. Fold chain in half lengthwise. Both sidecables should be in front of you. The sidecable with the black fastener should be on the ground.



2  
Keep the cable chain folded and drape it over the top of the outside tire. Both sidecables are at the front of the tire.



3  
Flip top half of the chain over the top of the inside tire. Make sure that the smooth sides of the eyelets (marked "TIRE SIDE") are against the tire.

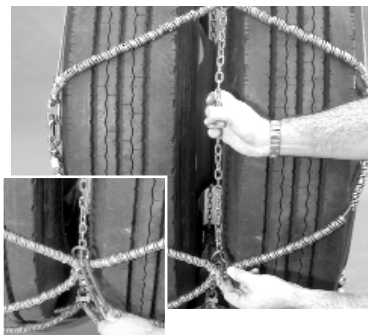


4  
Roll 1/4 of a tire revolution onto the chain. Connect the inside speed hook.



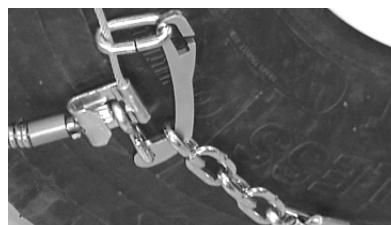
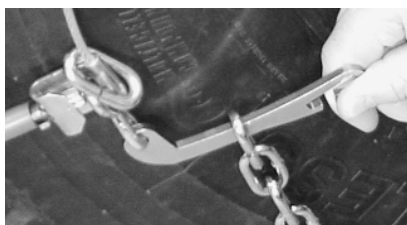
5  
Connect the outside latch fastener and secure with link.

## Installation



Insert the Rubber/Hook center rail fastener, on the QuickDraw center rail chain, through the oval ring. Pull on the center rail fastener to remove all excess slack in the center rail chain. Hook the center rail fastener back onto the center rail chain as far from the oval ring as possible. At this point, the center rail chain shackles should be located in the area between the dual tires to avoid contacting the road surface. After driving a short distance, check the tightness of the chain. If necessary, retighten the QuikDraw tensioning chain. Rubber tighteners should NOT be installed with this product.

## Close-Up of outside fastening system



## Removal

Drive vehicle off highway to safe level ground. Turn off the engine. Unhook the QuickDraw™ tensioning chain. Open the outside and inside end fasteners. Lay the chain on the ground and drive off the chain, **taking care not to drive over the tensioner hooks**. Examine chains for damage or worn parts. Place pair together and put back into the package or hang on “chain hangers”.

## One Year Limited Warranty

This product is warranted free from defect in workmanship and material for one year from the date of delivery to the user. Defective product may be returned to the manufacturer, freight prepaid, within 10 days of alleged defect. Inspection will be made to determine cause of failure. Chain determined to be defective will be repaired or replaced. Buyer shall not be entitled to recover any incidental or consequential damages. No compensation will be made for any labor claim, delays or damages incurred by using this product. Although this warranty gives you specific rights, you may have other legal rights which differ from state to state. For more information, please write to:

Security Chain Co.  
Customer Service Dept.  
P.O. Box 949  
Clackamas, OR 97015-0949



Speeds over 30 mph, improper fit or improper installation voids this warranty.

**⚠ CAUTION:** All winter traction products will wear out with extended use. They can also break due to misfit, misapplication or misuse. If this should occur, stop immediately and remove the chain. Care should be taken when using this product on wheels. On vehicles with protruding alloy wheels, other traction products that do not use a rubber tensioner (such as SCC's or ladder-style cable products) should be used. If these cautions are ignored, Security Chain Co., and it's distributors are not responsible for injury or vehicle damage.

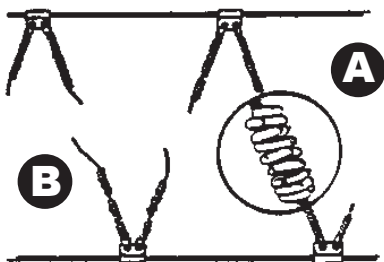
### For maximum chain life

- \* Avoid speeds over 30 mph and use on bare pavement. Traction coils on cross members will fragment and cause cross members to break. Damage could occur to chains, tires and vehicles.
- \* Avoid spinning tires: start slowly, even in uphill conditions.
- \* Avoid locking brakes: the best braking technique is a pumping action.
- \* If a cross member should break, stop & remove or replace it immediately.
- \* After use, clean and spray with an all-purpose lubricant.

### Examples of damage that can occur

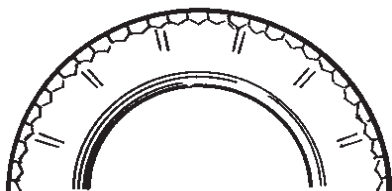


Typical cross member with 3 traction coils on each side free of wear and abrasion. Traction coils are still round and can rotate. All other coils made contact with the road indicating normal use and wear



[A] Fragmented traction coils - Traction coils in middle of cross members begin to fragment due to speeds over 30 mph and/or excessive bare pavement driving.

[B] As traction coils fall away from the cross cable, road contact with the cross cable will eventually cause breakage.



Tire sidewall damage can result from driving at speeds above 30 mph. Chain becomes stationary on the tire and is not permitted to slowly rotate. Another cause could be installing the chain upside down; the metal tabs will dig into the tire.